

S2C Echosounder

PRODUCT INFORMATION

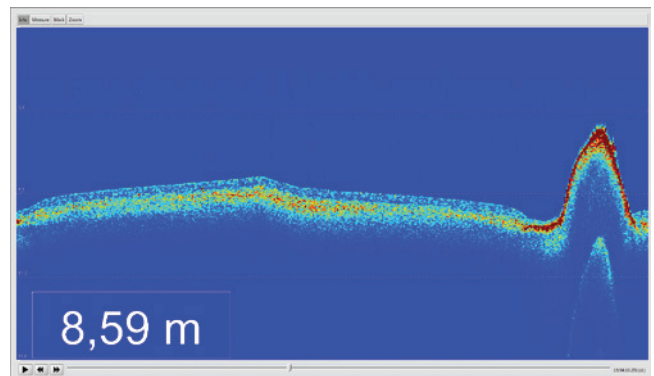


Integrated into EvoLogics Sonobot ASV
 80-120 kHz wideband signals
 Depth indication and echogram plot
 Autorange or user-adjustable depth range
 Adjustable sounding rate - up to 5 Hz
 Depth range from 0.5 m to 250 m

TECHNICAL SPECIFICATIONS

GENERAL	FREQUENCY	80 – 120 kHz wideband sweeps
	DEPTH RANGE	0.5 - 250 m
	RESOLUTION / ACCURACY	1 mm / 6 mm
	BEAM WIDTH	11°
	SOUNDING RATE	up to 5 Hz, adjustable
	SOUND PRESSURE LEVEL	190 dB re 1 µPa @ 1m
DATA	PARAMETERS	Adjustable Sound velocity, Threshold, Gain
	DATA OUTPUT	Ethernet, data stored on Sonobot payload PC Single depth values Echogram
POWER	CONSUMPTION	30 W / 15V
	POWER SUPPLY	10 – 18V, 3A
PHYSICAL	DIMENSIONS	L 240 mm x W 90 mm x H 135 mm
	WEIGHT	1.3 kg (including transducer cover for Sonobot)
	TEMPERATURE	Operating: 0° - 45° C Storage: -5° - 55° C

The S2C Wideband Single Beam echosounder is integrated into the Sonobot ASV and offers high-resolution bathymetric measurements. Furthermore, it can provide an echogram for additional analysis of the seafloor. Optimized echo-signal processing results in improved noise-immunity and high spatial/depth resolution.



Specifications subject to change without notice. The images are for illustrative purposes only. Consult EvoLogics to make sure the actual characteristics match your requirements. ©EvoLogics GmbH - March 2017.